

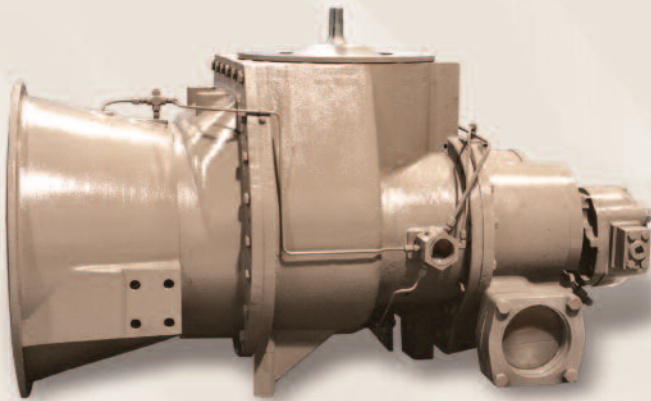


# LeROI® Gas Compressors

by Rotary Compression Technologies, Inc.

## LG30 and LGL30 Series

Models LG30XXX 600 HP and LGL30XXX 800 HP Gear Drive



*LG30XXXVFEF with Optional SAE # 0 Bell Housing, Versatrol and Oil Pump*

### PERFORMANCE

- Brake HP
 

|          |          |
|----------|----------|
| LG30XXX  | 600 Max. |
| LGL30XXX | 800 Max. |
- Flow Range (MSCFD)
 

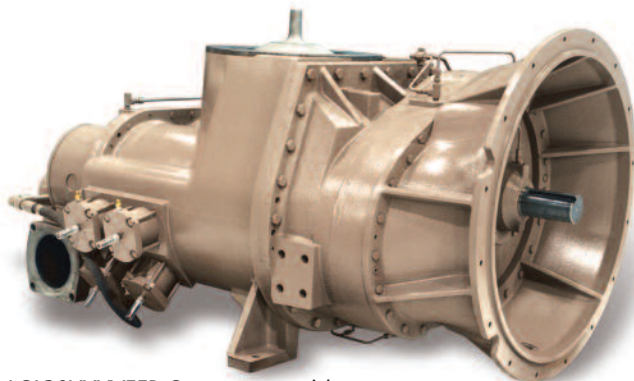
|          |              |
|----------|--------------|
| LG30XXX  | 13,000 MSCFD |
| LGL30XXX | 15,000 MSCFD |
- Inlet Pressure
 

|  |                   |
|--|-------------------|
|  | 20" Hg Vac. Min.* |
|  | 30 PSIG Max.      |
- Discharge Pressure
 

|          |                     |
|----------|---------------------|
| LG30XXX  | 20*-200 PSIG (MAWP) |
| LGL30XXX | 20*-150 PSIG (MAWP) |
- Speed Range
 

|  |                |
|--|----------------|
|  | 350 RPM Min.   |
|  | 2,400 RPM Max. |

*\* Consult Factory for use with lower vacuum inlet or discharge pressures.*



*LGL30XXXVFEF Compressor with SAE # 00 Bell Housing, Versatrol and Oil Pump*

### BENEFITS

Rotary Screw Compressors are very cost-effective for handling high volumes of gas in field gathering, vapor recovery, and other applications. The LG30XXX is suitable for applications to 600 BHP and discharge pressures up to 200 PSIG. The LGL30XXX is suitable for applications to 800 BHP and discharge pressures up to 150 PSIG.

Low maintenance and high reliability are inherent with rotary screws because they have few moving parts. There are no valves, rings or packing to wear out or cause loss of efficiency.

Smooth operation results from no unbalanced forces and no pressure pulsation. No foundation is required and there are no piping vibrations from pressure pulsation.

Natural gas engine or electric motor drives are equally acceptable with LG30XXX and LGL30XXX rotary screws.

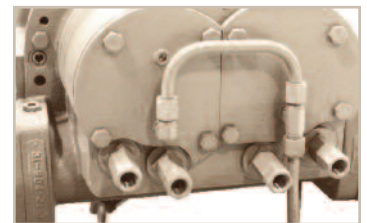
LeROI Rotary Screw Gas Compressors are available in 12 models covering a flow range of 20 to 15,000 MSCFD and horsepower from 10 to 800.

### FEATURES

Single-Stage operation from 5 PSIG to 200 PSIG maximum is possible with the LG30XXX and 150 PSIG for the LGL30XXX Series oil-flooded compressors. Compressor packages are therefore simple, reliable and inexpensive.

The gas differential pressure provides oil circulation for proper lubrication at differential pressures over 60 PSI. Optional oil pumps are available for with less than 60 PSI differential pressure.

Adjustable Vi allows discharge porting to be selected in the field to match the internal compression to the application requirement for maximum compression efficiency.



All iron or steel construction with no copper or copper alloys makes these compressors compatible with natural gas, sweet or sour.



# LeROI® Gas Compressors

by Rotary Compression Technologies, Inc.

## LG30 and LGL30 Series

Models LG30XXX 600 HP and LGL30XXX 800 HP Gear Drive

## Options and Specifications

### TECHNICAL SPECIFICATIONS

- Model LG30 and LGL30
- Rotor Dia. 309 mm (12.174 inches)
- Rotor L/D:  
LG30 – 1.66  
LGL30 – 2.2
- Rotor Description:  
Twin Screw SRM Profile with Sealing Strips,  
4 Lobe Male, 6 Lobe Female
- Shaft Seal(s) – Mechanical\*
- Drive System:  
Internal Helical Speed Increasing Gears  
(AGMA 11)  
Gear Ratios available  
LG30: 1.104 - 2.525  
LGL30: 1.585 - 3.059  
Rotation - Facing Shaft - CW  
Drive Shaft 2-7/8" Dia. with 3/4" Square Key
- Materials:  
Rotors – Ductile Iron 65-45-12  
Castings – Cast Iron G3000  
Bearings – Roller bearings on the inlet end and tapered roller bearings on the LGL30 discharge end, angular contact bearings on the LG30 discharge end – alloy steel races, rolling elements and cages.
- Weight:  
LG30 – 3,700 Pounds  
LGL30 – 4,500 Pounds

\* LeROI's mechanical seals prevent air from entering the gas stream when operated with any attainable vacuum inlet gas pressure.

### OPTIONS

- Versatrol Internal Bypass Valves:  
Versatrol internal bypass valves are available for efficient capacity control from 100-50% of design flow. Control can be manual with four steps or stepless with a microprocessor. Control system is not included.
- Internal Volume Ratio:  
The LG30 and LGL30 have LeROI's standard externally adjustable Vi feature, allowing internal compression optimization while the compressor is operating. Fixed Vi of H = 4.4, M = 3.3 and L = 1.9 are also available.
- Oil Pump:  
Integral oil pumps are available for low-pressure differential applications.
- SAE # 0 Flywheel Housing for LG30
- SAE # 00 Flywheel Housing for LGL30 (Bolt On)

### APPLICATIONS

- Gas Gathering
- Well Head Gas Compression
- Fuel Gas Boosting
- Vapor Recovery
- Inert Gas Boosting
- Landfill Gas

Visit [www.leroigas.com](http://www.leroigas.com) for additional information.



LeROI® Gas Compressors  
by Rotary Compression Technologies, Inc.

211 East Russell Road  
Sidney, Ohio 45365

Telephone: 937.498.2555  
Fax: 937.492.3424

[www.leroigas.com](http://www.leroigas.com)  
Email [sales@leroigas.com](mailto:sales@leroigas.com)



LeROI is an ISO 9001:2008 registered company

LeROI Gas Compressors policy is one of continuous improvement and we therefore reserve the right to alter specifications and prices without prior notice. All products are sold subject to the Company's conditions of sale.

Brochure re-order ref: #RCTLG30-LGL30 02/2010